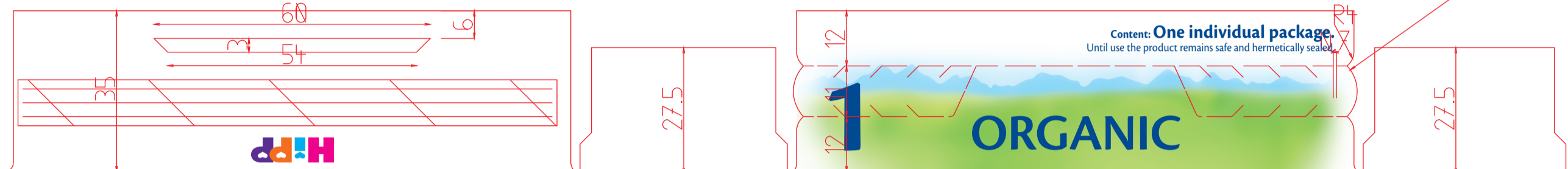


Projekt : HiPP Verpackung
 obere Staublaschen verlängert (TW 161104)
 Schraffierte Flächen farb- und lackfrei!
 Haltepunkte mit Produktion abstimmen!



Preparation

Please pay careful attention to the instructions when preparing infant milk formula. Incorrect preparation or storing a prepared feeding bottle for a longer period of time can be harmful to health, eg. due to undesired bacterial growth. For this reason, always prepare the formula from scratch before every meal and feed immediately. Do not re-use leftovers. Clean bottle, teat and ring thoroughly. Close the opened sachet tightly after every use, store in a dry place at room temperature (max. 25 °C) and use up within 3 weeks. Please do not warm up milk formula in the microwave oven (danger of scalding).

Boil fresh drinking-water and leave it to cool down to approx. 40 °-50 °C.

Pour 2/3 of the prepared water into the feeding bottle.

Fill the measuring spoon loosely and level with the back of a knife. Put the recommended amount of powder into the feeding bottle.



Close bottle and shake.

Add the remaining water and again shake several times.

Cool down to drinking temperature (approx. 37 °C). Check temperature.

Drinking amount & dosing

The drinking amount per feeding bottle may vary from baby to baby. The recommended drinking amounts and the number of bottles per day are guideline values. Your baby does not necessarily have to empty the feeding bottle completely. Please use the enclosed measuring spoon only!

Age	Bottle feeds per day	Ready-to-drink product, ml	Dosage per meal	
			Boiled water, ml	Measuring spoon
1 st week to 2 nd week*	5-7	70	60	2
3 rd to 4 th week	5-7	100	90	3
5 th to 6 th week	5-6	135	120	4
7 th to 8 th week	5	170	150	5
3 rd to 4 th month	5	200	180	6
from the 5 th month**	5	235	210	7

Use 30 ml boiled water per measuring spoon.

*Unless otherwise recommended by a paediatrician.

**From the 5th month onward, you can introduce jars and paps after consulting your paediatrician.

Babies need about 5 meals a day. With every newly introduced jar or pap meal, you should drop one bottle feeding.

Important information

...on the nutrition of your baby

Breast is best for your baby. Please consult your maternity clinic or your paediatrician if you want to use an infant formula.

...on your baby's dental health

Just like breast milk, all infant formulae contain carbohydrates. They are an important part of your baby's nutrition. Permanent contact of your baby's teeth with food containing carbohydrates may lead to severe tooth decay. Therefore, do not leave the bottle to your child for permanent sucking and let your child drink from a cup as early as possible.

Use

- from birth onwards as exclusive nutrition or to complement breastfeeding
- after breastfeeding or after any other infant formula
- can be fed like breast milk as required – as frequently and as much as your baby wants to drink.

Organic production in HiPP Top Quality

Out of conviction, we firmly believe in strictly controlled organic ingredients. With regard to the choice of raw materials, we clearly exceed the strict statutory requirements for infant milk formulae. We guarantee the highest possible safety for you and your baby by means of very strict quality controls starting with the raw materials right through to the finished product.



The HiPP organic seal guarantees the highest quality and exceeds the EU organic requirements.



(DE-ÖKO-001)
EU/Non-EU agriculture

Composition

	per 100 ml ready-to-drink product*
energy	289 kJ / 69 kcal
fat (of which)	3.5 g
saturates	1.2 g
mono-unsaturates	1.6 g
polyunsaturates	0.7 g
carbohydrate (of which)	8.1 g
sugars†	6.9 g
starch	1.2 g
protein	1.4 g
salt‡	0.05 g
mineral substances	
sodium	0.02 g
potassium	83 mg
chloride	42 mg
calcium	55 mg
phosphorus	35 mg
magnesium	5.3 mg
trace elements	
iron	0.7 mg
zinc	0.5 mg
copper	40 µg
iodine	10 µg
selenium	1.5 µg
manganese	75 µg
fluoride	< 5 µg
vitamins	
vitamin A	70 µg
vitamin D	1.2 µg
vitamin E	0.7 mg
vitamin K	4.9 µg
vitamin C	10 mg
vitamin B ₁	0.06 mg
vitamin B ₂	0.13 mg
niacin	0.40 mg
vitamin B ₆	0.04 mg
folic acid	10 µg
vitamin B ₁₂	0.15 µg
pantothenic acid	0.50 mg
biotin	1.6 µg
L-carnitine	1.9 mg
choline	15 mg
inositol	4.9 mg
further nutritional values	
linoleic acid (Omega-6 FA)	0.6 g
linolenic acid (Omega-3 FA)	0.07 g
LCP	16 mg

The analysis values are subject to fluctuations typical of natural products. Packaged in a protective atmosphere.
 *Standard solution: 13.7 g HiPP 1 ORGANIC + 90 ml water = 100 ml ready-to-drink product.
 †level measuring spoon = approx. 4.6 g HiPP 1 ORGANIC.
 ‡from lactose, the natural milk sugar (6.9 g/100 ml)
 †calculated from the natural amount of ingredients

Ingredients

Skimmed milk*, whey powder* partially demineralised, vegetable oils* (palm oil*, rapeseed oil*, sunflower oil*), starch*, lactose*, calcium carbonate, LCP oils (fish oil, vegetable oil from mortierella alpina), potassium chloride, L-tyrosine, vitamin C, L-tryptophan, ferrous sulphate, zinc sulphate, vitamin E, stabiliser L (+) lactic acid, niacin, pantothenic acid, copper lysine complex, vitamin A, vitamin B₁, vitamin B₆, manganese sulphate, potassium iodate, vitamin B₂, sodium selenate, folic acid, vitamin K, biotin, vitamin D, vitamin B₁₂.

*from organic production gluten-free (as required by law)
 †long-chain polyunsaturated CMO-free (in accordance with the EC Organic Farming Regulation)
 ‡faty acids



ORGANIC
 Organic top quality
 with the best nature has to offer



Important:
 Breast milk is best for your baby. Please pay careful attention to the notes, given on the backside of the packaging.

1
 Organic Infant Milk
 from birth onwards
 deliciously filling

HiPP 1 ORGANIC: with the best ingredients nature has to offer

For more than 50 years, we have been putting our entire diligence and experience into producing excellent milk formulae. As a pioneer in organic production, we have firmly believed in using the best organic ingredients for milk formulae for decades. We are convinced that, for the period after breastfeeding, our organic infant milk formulae can be an important contribution towards healthy development.

HiPP 1 ORGANIC supplies babies with everything they need for healthy growth until weaning foods are introduced:

- ✓ all the essential nutrients
- ✓ LCP: ARA and DHA (omega-6 & omega-3 fatty acids) are particularly important during the first months of life, since at this age babies are unable to produce sufficient LCPs by themselves.

HiPP 1 ORGANIC:

- ✓ provides good feeling of satiety due to its composition. Contains easily digestible starch.
- ✓ is easy to digest: adapted to suit the particular nutritional needs of infants.

If you have any questions concerning your baby's diet

Exporter: HiPP GmbH & Co. Export KG, Theresienhalstraße 68, 4810 Gmünd/Austria
 Producer: Milchwirtschaftliche Industrie Gesellschaft Herford GmbH & Co. KG, Westring 152, 32051 Herford/Germany

AL2068 Organic Infant milk

Originally sealed best before:
 see bottom of package **e 300g**



Ntz.-Nr.

Produktinfo:

Projekt:	AL2068 HiPP 1 ORGANIC	
Material-Nr.:	217750	
Prägung:	<input checked="" type="checkbox"/> Ja <input type="checkbox"/> Nein	
Prägung aus Mat.-Nr.:	217158	
Farbigkeit:		
Cyan	Magenta	Yellow
Pantone 280 C	Stanzform	
Bearbeitet:	Thomas Siegl Thomas.Siegl@hipp.at	

268
201

FFI-Nr.

Klebe-Code

Lief.-Nr.
Auftrags-Nr.



Codierzone

AL2068

FSB
14_1147EM
217750
-1104-

